

## CLEARANCE REQUIREMENTS – METER ON PEDESTAL

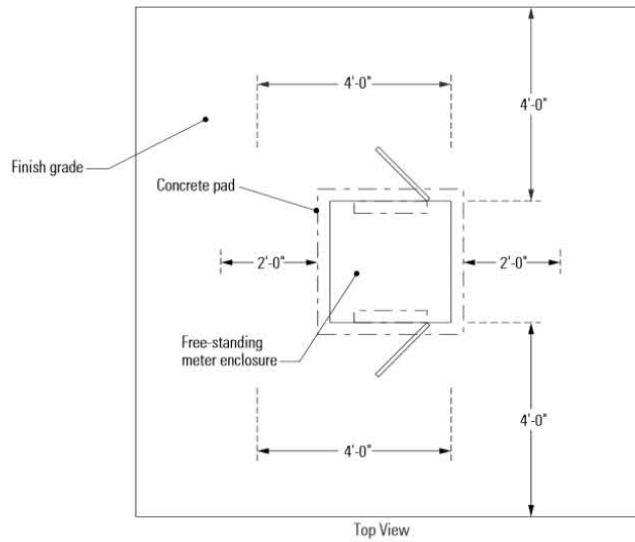


Figure 4-9. Free-standing meter enclosure working space.

## CLEARANCE REQUIREMENTS – METER ON HOUSE

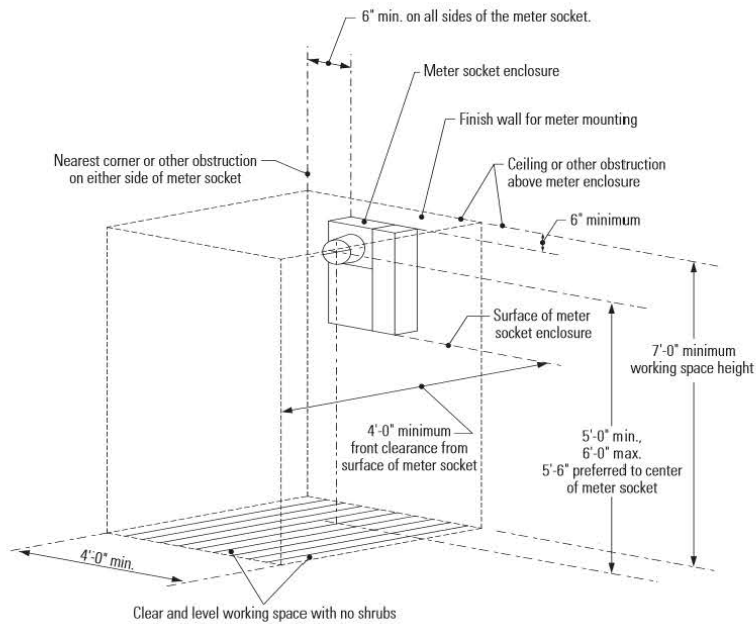


Figure 4-2. Clearances around meters.

DESIGN PARAMETERS:  
(See PICS)

## COGEN PEDESTAL INSTALLATION GUIDE

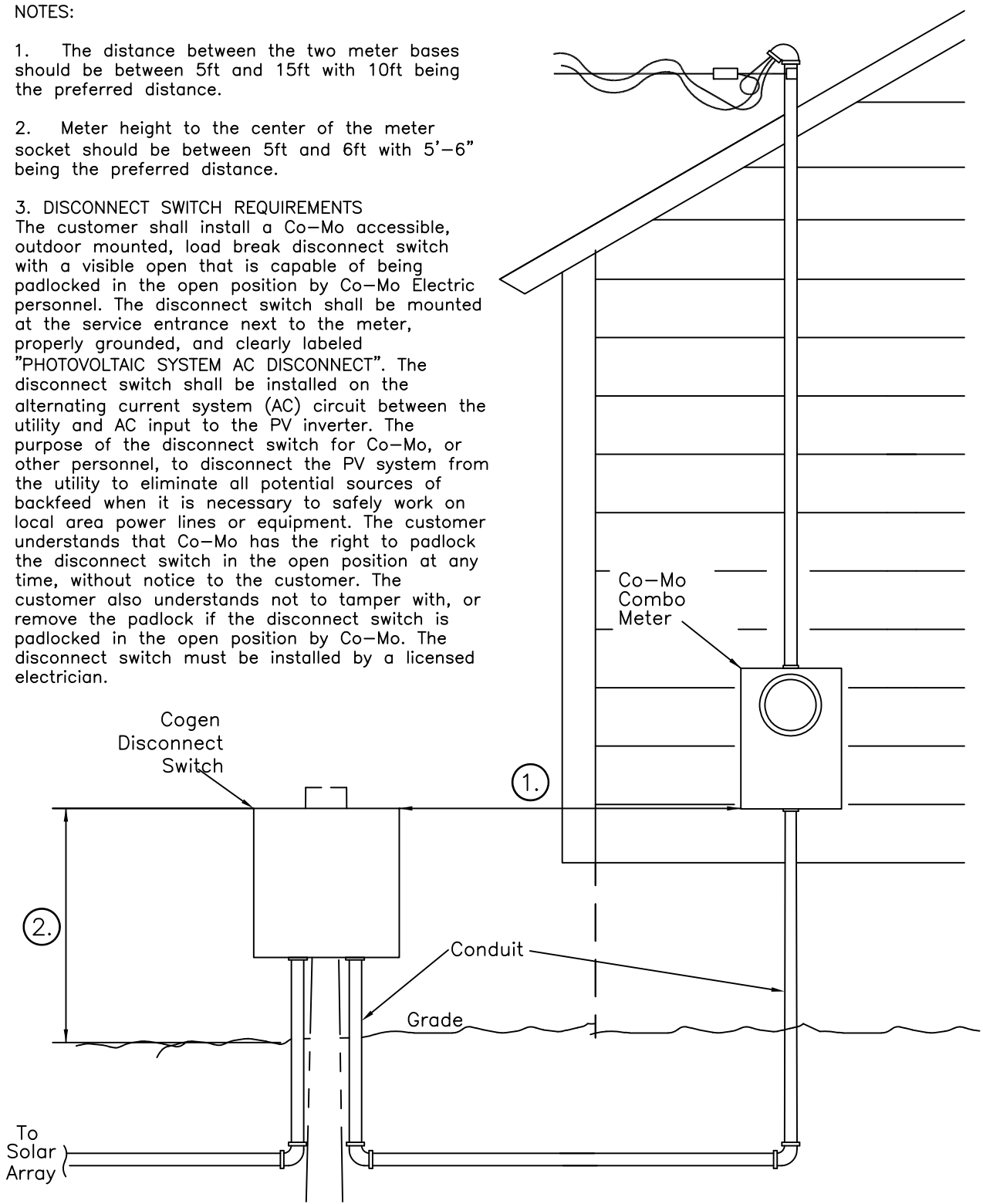
APRIL 2015

CO-MO

COGEN-1

NOTES:

1. The distance between the two meter bases should be between 5ft and 15ft with 10ft being the preferred distance.
2. Meter height to the center of the meter socket should be between 5ft and 6ft with 5'-6" being the preferred distance.
3. DISCONNECT SWITCH REQUIREMENTS  
 The customer shall install a Co-Mo accessible, outdoor mounted, load break disconnect switch with a visible open that is capable of being padlocked in the open position by Co-Mo Electric personnel. The disconnect switch shall be mounted at the service entrance next to the meter, properly grounded, and clearly labeled "PHOTOVOLTAIC SYSTEM AC DISCONNECT". The disconnect switch shall be installed on the alternating current system (AC) circuit between the utility and AC input to the PV inverter. The purpose of the disconnect switch for Co-Mo, or other personnel, to disconnect the PV system from the utility to eliminate all potential sources of backfeed when it is necessary to safely work on local area power lines or equipment. The customer understands that Co-Mo has the right to padlock the disconnect switch in the open position at any time, without notice to the customer. The customer also understands not to tamper with, or remove the padlock if the disconnect switch is padlocked in the open position by Co-Mo. The disconnect switch must be installed by a licensed electrician.



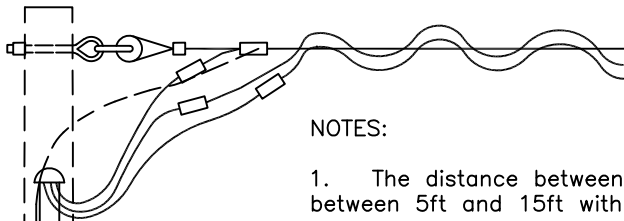
DESIGN PARAMETERS:  
(See NOTES)

COGEN PEDESTAL  
METER ON HOUSE

APRIL 2015

CO-MO

COGEN-3



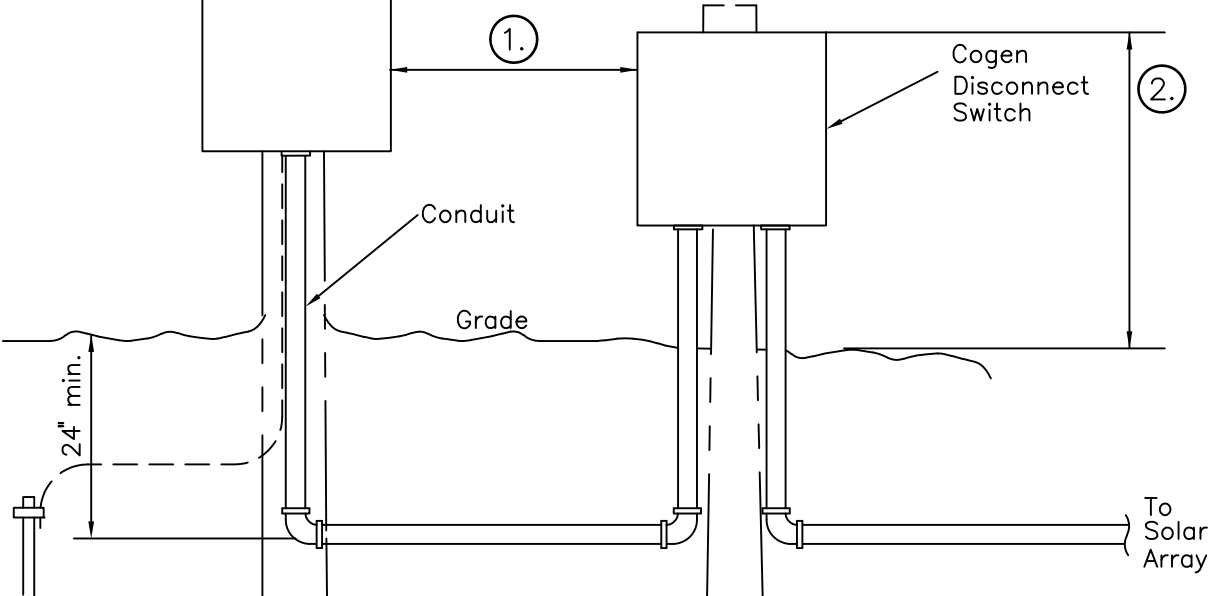
NOTES:

1. The distance between the two meter bases should be between 5ft and 15ft with 10ft being the preferred distance.
2. Meter height to the center of the meter socket should be between 5ft and 6ft with 5'-6" being the preferred distance.

3. DISCONNECT SWITCH REQUIREMENTS

The customer shall install a Co-Mo accessible, outdoor mounted, load break disconnect switch with a visible open that is capable of being padlocked in the open position by Co-Mo Electric personnel. The disconnect switch shall be mounted at the service entrance next to the meter, properly grounded, and clearly labeled "PHOTOVOLTAIC SYSTEM AC DISCONNECT". The disconnect switch shall be installed on the alternating current system (AC) circuit between the utility and AC input to the PV inverter. The purpose of the disconnect switch for Co-Mo, or other personnel, to disconnect the PV system from the utility to eliminate all potential sources of backfeed when it is necessary to safely work on local area power lines or equipment. The customer understands that Co-Mo has the right to padlock the disconnect switch in the open position at any time, without notice to the customer. The customer also understands not to tamper with, or remove the padlock if the disconnect switch is padlocked in the open position by Co-Mo. The disconnect switch must be installed by a licensed electrician.

Co-Mo 200A  
Combo Meter  
Required



DESIGN PARAMETERS:  
(See NOTES)

COGEN PEDESTAL  
METER ON POLE

APRIL 2015

CO-MO

COGEN-2